

# KA HŪLILI

## NASW Hawaii Chapter Newsletter

“These are the times  
that try men's souls.”

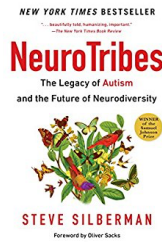
— Thomas Paine,  
The American Crisis



### NATIONAL NASW LEGISLATIVE UPDATE



### NASW HAWAII CONFERENCE WRAP



### BOOK REVIEW: NeuroTribes: The Legacy of Autism and Future of Neurodiversity

## March is Social Work Month!

Social workers stand up for millions of people every day. These include people who are experiencing devastating illnesses and mental health crises, our veterans, children, families and communities. Yet many people still misunderstand who social workers are and the invaluable contributions they bring to society.

This year we will commemorate Social Work Month with a “Social Workers Stand Up!” campaign. This campaign will educate the public about the contributions of social workers and give social workers and their allies tools they can use to elevate the profession.

### **Social Work Month Event in Hawaii:**

- *Friday, March 10, NASW Hawai'i Social Work Awards Gala, 5:50-9:30pm @ Pomaika'i Ballrooms*

<http://www.naswhi.org/gala.html>

- *Thursday, March 16, Social Work Social Hour 5-7 pm @ Elks Club, Honolulu*

<https://www.facebook.com/events/263677144053211/>

- *Monday, March 20, Social Work Legislative Day 9:30am-2pm @ Capitol*

<http://www.naswhi.org/advocacy--legislation.html>



### Join the Social Work Month Twitterstorm!

**Who:** You and/or your organization

**What:** A Twitterstorm is a sudden spike in activity surrounding a certain topic on the Twitter social media site. NASW wants to use a Twitterstorm to tell the public, policymakers and lawmakers about the importance of the social work profession in bringing about positive social work change. The Twitterstorm will also give social workers resources to get involved in promoting the profession.

**When/Where:** Twitter, March 8 at 2 pm

# SOCIAL WORKERS stand UP

#SocialWorkersStandUp

## TAKE PRIDE IN SOCIAL WORK

- Identify as a social worker in addition to being a psychotherapist, professor, researcher, administrator, community organizer or legislative aide.
- Include MSW or other social work degrees or credentials on your business card and email signature.
- Add your social work licensure, degree or credential to your name on social media accounts.
- Identify as a social worker if you write letters to journalists, politicians or other groups.



## EMPOWER STUDENTS

- Encourage social work schools to run special programs that enable students to feel positive about the profession.
- Visit middle schools, high schools and colleges to tell students why you love your profession.

## SPREAD THE WORD

- Offer to do media interviews about social work.
- Write letters to the editor on important social work issues.
- Write articles, blog posts and even books about social work.
- Encourage your colleagues to hold events or distribute materials that show the value of social work.
- Conduct and encourage research that demonstrates the value of social work.



## THINGS TO AVOID

- Refrain from joking about the low pay or high workloads of some social workers. These are serious issues, and joking about them may belittle the profession.
- Don't say things such as, "I'm not doing this for the money." It is important that social workers be properly compensated for their work.



# If the Media Misrepresents Social Workers...



Confirm that the person mentioned is in fact a professional social worker. Contact your state licensing board, if necessary.



Always be polite but firm. Don't just complain; clearly explain how the social worker was misrepresented -- and how that misrepresentation can be corrected.



Email or call the writer, editor or producer and ask them to run a correction. You can also educate them about the social work profession.



Write a handwritten note to the media outlet. Be sure to send your letter certified in order to confirm receipt.



Go to the media company's website or social media page and express your concern. Many companies monitor their social media channels and respond to reader complaints.



If the misrepresentation is serious, contact your NASW chapter ([www.socialworkers.org/chapters](http://www.socialworkers.org/chapters)) or email NASW's public relations department for assistance ([media@socialworkers.org](mailto:media@socialworkers.org)).



Write a letter to the editor explaining what the article got wrong or left out.



Post an online comment to express your disappointment with the article's portrayal of the social worker.

## Letter from the Executive Director

Aloha kākou,

As I watch the tendrils of a fog of ugliness creep across our country, I find myself more and more grateful to have chosen the path of a Social Worker. As Social Workers, our degrees and our experience in the field and that voice inside that drew us to this helping profession have given us the ability and tools to fight that ugliness and bigotry and be an advocate; to speak up against injustice, to work to protect the most vulnerable members of our society. A friend asked me recently how I find strength to rally and not to lose hope in people . My response was that I find support and momentum from within the Social Work community.



I draw strength and renewal from interactions with our NASW members and other Social Workers that I have the privilege of interacting with in the community. I am reminded every day how many of us there are working to make positive change I want to thank all of you who have called our office, or sent an email or stopped by our office, to ask about Licensing, Continuing Education, different events. With each interaction, I am reminded of our strength in numbers and that in our small state, there are more than 2,000 social workers affecting positive change in their neighborhoods and communities.

Our community of nearly 900 NASW Hawai'i members has the knowledge and experience to keep making a difference, even when some parts of life may be in turmoil. As members of a profession rooted in social justice, we have an obligation to keep fighting the good fight and I encourage you to look to each other for continued support and motivation.

It is in this spirit of coming together that NASW Hawai'i is putting on monthly Social Work Social Hours on O'ahu and will be working with our neighbor island representatives to schedule these events on all islands. These Social Hours provide an opportunity to connect with our social work community, and remind ourselves that we are part of something special. Come connect, unwind, network, and meet other amazing people.

Many thanks,

*Sonja*

Sonja Bigalke-Bannan, MSW, LSW  
Executive Director | NASW-Hawaii Chapter  
[info@naswhi.org](mailto:info@naswhi.org)



# NASW HAWAI'I

## *2017 Awards Gala*

HAWAI'I'S SOCIAL WORK LEGACY  
REFLECTING ON OUR PAST  
EMBRACING THE PRESENT  
ENVISIONING OUR FUTURE

FRIDAY, MARCH 10, 2017, 5:30-9:30PM  
POMAIKAI BALLROOMS, HONOLULU, HI

HONORING:  
JACKIE HONG- LIFETIME ACHIEVEMENT AWARD  
CHRISTINE LANGWORTHY- LIFETIME ACHIEVEMENT AWARD  
SCOTT MORISHIGE- PRACTITIONER OF THE YEAR  
WE ARE OCEANIA- ADVOCACY AWARD  
DR. CHAD KOYANAGI- FRIEND OF SOCIAL WORK  
REPRESENTATIVE DELLA AU BELATTI- LEGISLATOR OF THE YEAR

For more information or to purchase tickets, please visit

<http://www.naswhi.org/gala.html>

## 2017 NASW Hawai'i Conference a Success

The theme of “Building Connections-Fostering Community” lead to the creation of our very first, multi-day, 2 track conference. The conference took place on January 26th and 27th at Hawaii Pacific University’s beautiful new Aloha Tower classroom facilities, thanks to generous support from the HPU School of Social Work. Additional conference sponsors included the University of Hawai’i MBT School of Social Work and HMSA.

Thursday programming was broken into 2 tracks, Mental Health and Child & Family. Lunch both days was a “Lunch & Learn”, in order to provide the maximum number of CEUs per day. Day 1 “L&L” was a Q & A session about the current Hawai’i State Legislative Session, with three different advocates from different agencies. Day 2 was the Hawai’i premier of the film “A Small, Good Thing”, with a reminder to slow down and take time to try to simplify our lives.

NASW Hawai’i President Robin Arndt hosted a membership meeting and pau hana at the conclusion of Day 1.

Some of the sessions included:

- *Breaking through the Misconceptions: Modern Day Slavery in a Global Community*

Dr. Sarah Maynard, PhD, MSW

- *Building Ethical Capacity in the Volunteer and Paraprofessional Workforce*

Dr. Michaela Rinkel, MSW, Ph.D.

- *Mediation: An Alternative to Child-Related Litigation*

Katherine Bennett, JD, MSW

- *Life Review and PTSD therapy: Making Connections Toward Recovery with Two Groups of Vietnam War Veterans*

Dr. Lori Daniels, MSW, Ph.D.

Many thanks to all of our conference attendees, presenters, and hard working volunteers for making this such an amazing event! The conference committee is already hard at work planning for 2018! Please let us know if you would like to join the conference committee.



Some of our conference planning committee at the member meeting and Pau Hana after Day 1



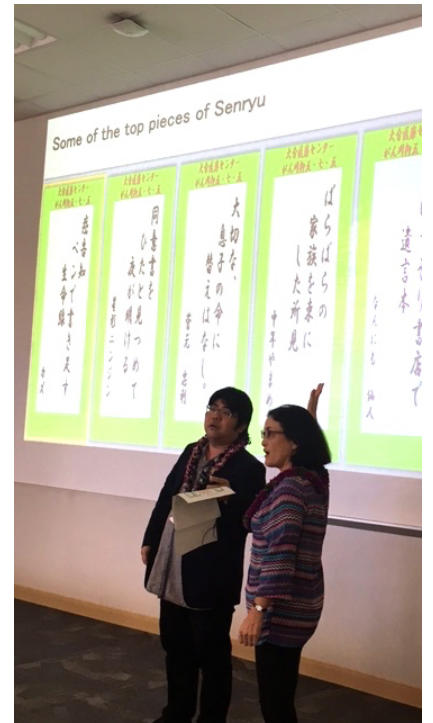
MSW student rep Kim Soito working the registration and merchandise table



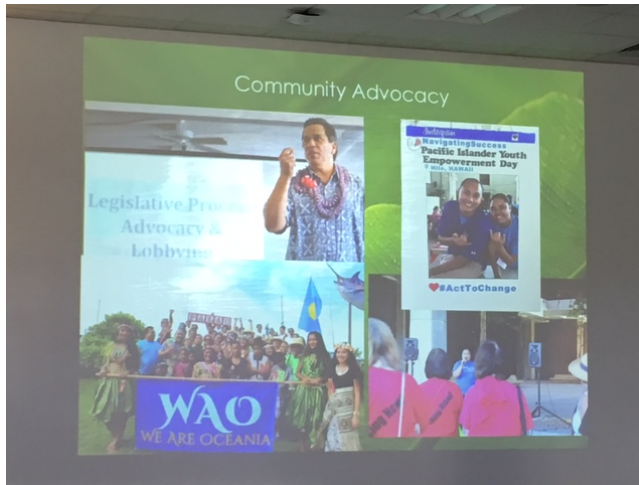
We gave out travel mugs to use for coffee & water to cut down on the waste & reduce the footprint of the event. Volunteers washed the mugs the night before!



Full house for a presentation in the super high-tech conference room



Learning about using Senryu poetry with cancer patients



UP! Out of our seats for a drama therapy workshop!

Upcoming CEs			
What	When	Where	Register
Brain Change: An Entertaining Look at Neuroplasticity and Why it Matters to Social Workers	March 17, 2017 9am-12pm 3 CEUs	HPU, Hawaii Loa Campus 45-045 Kamehameha Hwy, Kaneohe <b>(O'ahu)</b>	<a href="https://www.hpu.edu/CHS/Social_Work/social.work.professional.development.hpu.20172.pdf">https://www.hpu.edu/CHS/Social_Work/social.work.professional.development.hpu.20172.pdf</a>  \$25 students, \$45 regular price
Institute on Violence and Trauma Conference	March 27-30, 2017 9:00am-4:30 pm  up to 28 CEUs	Hawaii Convention Center <b>(O'ahu)</b>	<a href="http://www.ivatcenters.org/hawaii-summit/">http://www.ivatcenters.org/hawaii-summit/</a>  10% discount for NASW members Cost: Pre-summit & summit \$360, Summit only \$240, 1 day attendance \$140-150
Social Work Licensing Test Prep Workshop	April 14, 2017 1pm-4pm  3 CEUs	677 Ala Moana, 7th floor conference room, Honolulu  <b>(O'ahu and virtual)</b>	<a href="http://events.eventzilla.net/e/social-work-licensing-test-prep-course-2138893792">http://events.eventzilla.net/e/social-work-licensing-test-prep-course-2138893792</a>  Includes validated parking  NASW member \$35.00, non-member \$65.00, NASW members & test prep book \$145.00, Non-member & test prep book \$175.00
A Taste of Motivational Interviewing	April 21, 2017 9am-12pm  3CEUs	HPU, Hawaii Loa Campus, 45-045 Kamehameha Hwy, Kaneohe <b>(O'ahu)</b>	<a href="http://www.hpu.edu/CHS/Social_Work/social.work.professional.development.hpu.20172.pdf">www.hpu.edu/CHS/Social_Work/social.work.professional.development.hpu.20172.pdf</a>  Cost: students \$25, all others \$45



Upcoming CEs			
Non-profit Revenue Generation: A Path to Sustainable Funding in an Era of Diminishing Resources	May 12, 2017 9am-12pm  3 CEUs	HPU, Aloha Tower Campus <b>(O'ahu)</b>	<a href="http://www.hpu.edu/CHS/Social_Work/social.work.professional.development.hpu.20172.pdf">www.hpu.edu/CHS/Social_Work/social.work.professional.development.hpu.20172.pdf</a>  Cost: students \$25, all others \$45
Ok Corral: Equine Assisted Psychotherapy Workshop	May 19-21, 2017 8am-4pm  24CEUs	Heart Ranch, Hilo, HI  <b>(Hawai'i Island)</b>	<a href="http://okcorralseries.com/event-calendar">okcorralseries.com/event-calendar</a>  Early Bird \$875, Regular rate \$1075, Returning rate \$650, \$247 Refresher rate
EMDR as a Transpersonal Therapy: A Cross Cultural perspective Where East Meets West	May 22-27, 2017  times vary daily  30 CEUs	Kalani Retreat Center, 12-6860 Kalapana-Kapoho Beach Road, Pahoia  <b>(Hawai'i Island)</b>	<a href="http://www.drirenesiegel.com/greenwill.htm">www.drirenesiegel.com/greenwill.htm</a>  Local therapists will receive discounted rate of \$650, plus \$210 for meals

## Book Review: Neurotribes: the Legacy of Autism and the Future of Neurodiversity

In *Neurotribes*, Steve Silberman explores the history of Autism, with incredible depth. As a tech and digital journalist, he is an unusual person to tackle the subject. He was drawn to the area of Autism, researching an article he wrote for *Wired* magazine in 2001 after interviewing programmers and engineers in Silicon Valley. After completing several interviews with prominent tech innovators he learned that several had Autistic children. In his article, he posited the theory that Silicon Valley had become a hot spot for autism diagnoses because nerdy programmers and engineers met there and had children while carrying a “genetic predisposition” for the disorder.

He begins by examining the similarities and differences between the two doctors that originally identified Autism, Leo Kanner in Baltimore and Hans Asperger in Vienna, who labeled and identified Autism in 1943.

The author comes down hard on the advocates who who mistakenly pinned autism’s cause on the MMR vaccine and continue to stubbornly cling to the mistake. The heroes in book are the scientists, inventors and engineers (both historic and current) work has been enhanced by their autistic perspectives. He follows families and adults who embrace their diagnosis and have learned to live fully with autism and find its strengths.

Silberman ends the journey with the advocacy work being done today by autistic self-advocates to reframe autism as a “difference” to be accepted and accommodated, rather than expunged. A great read, I highly recommend it.

# National NASW Legislative Update

## ***Legislative Efforts:***

The NASW National Office has met with the offices of Sen. Debbie Stabenow (D-MI), Rep. Barbara Lee (D-CA-13) and Rep. Kyrsten Sinema (D-AZ-9) to discuss introduction of several NASW supported bills, e.g., the Improving Access to Mental Health Act, Social Work Reinvestment Act, Social Work Month Resolution and Social Work Safety Act. We will keep you informed once legislation is introduced and will provide details so that you can advocate for additional cosponsors and action.

In addition, NASW sent letters to the key Congressional committees; Senate Health, Education, Labor, and Pensions Committee, Senate Finance Committee, House Ways and Means Committee, House Energy and Commerce Committee and Senate Education and the Workforce Committee. These letters highlighted the role of social workers within our communities, outlined this year's legislative priorities for NASW and our members, and urged support of provisions NASW hopes to retain in any health care reform efforts.

## **Social Work Organizations Oppose Repeal of the Affordable Care Act**

NASW and the Society for Social Work Leadership in Health Care (SSWLHC) issued a [joint statement](#) on February 13<sup>th</sup> to oppose efforts to repeal or change key provisions of the Affordable Care Act. Significant gains that have been made in health insurance coverage, health care access and opportunities for health care social workers should not be undone. Post received more than 1,000 likes and 280 shares on Facebook.

NASW posted [action alerts](#) about the Affordable Care Act (ACA) on our web site. To date, 1,991 advocates contacted 6,159 Members of Congress about the ACA in response to our alerts.

## ***Administrative Efforts:***

### **Nominations**

Despite her eventual confirmation by the Senate, NASW [withheld support](#) for the confirmation of Betsy DeVos to become the U.S. Secretary of Education.

### ***Coalition Efforts:***

NASW participated in coalition work with:

- Leadership Council of Aging Organizations
- Leadership Conference on Civil and Human Rights
- Coalition on Human Needs
- Mental Health Liaison Group
- National Coalition to End Child Abuse Deaths
- National Child Abuse Coalition
- Protect Our Care Coalition

### **Child Welfare**

On February 7<sup>th</sup>, NASW hosted a meeting for National Coalition to End Child Abuse Deaths. Discussion included plans to coordinate Hill visits in March to highlight recommendations from Commission to Eliminate Child Abuse and Neglect Fatalities' report, "Within Our Reach: A National Strategy to Eliminate Child Abuse and Neglect Fatalities."

On February 21<sup>st</sup>, NASW staff, as a member of the National Child Abuse Coalition member, attended a special meeting featuring David Reich of the Center on Budget and Policy Priorities where he discussed recent budget developments in Congress, including the current appropriations and reconciliation processes.

## Health Care

Staff attended the National Rural Health Association Policy Institute Forum on February 8<sup>th</sup>, stakeholder meeting funded by the Robert Wood Johnson Foundation about initiatives to advance rural health.

Staff attended the Families USA Health Action Conference on February 17<sup>th</sup>, convening on the topic of preserving health care gains, follow up action to open enrollment and national and state strategies to protect Medicaid.

## Criminal Justice

On January 27<sup>th</sup>, staff attended the American Psychological Association-NASW Consensus Working Group on Mental Health in Criminal Justice follow-up meeting. The agenda for this meeting was to address the concerns for potential Affordable Care Act/Medicaid changes articulated by the Congress and Trump Administration. In particular, the group agreed to develop recommendations on the importance of Medicaid expansion to low-

income justice involved persons with mental illness. NASW staff is leading these efforts by chairing the Medicaid sub-group that will draft the recommendations.

On January 26<sup>th</sup> NASW staff co-led a Grand Challenges Criminal Justice Practice Working conference call with Professor Melissa Grady of Catholic University. We were joined by 10 working group members representing criminal justice social workers from diverse geographical areas. The call was organized to define roles and the process for developing major social work oriented written documents and webinars about social work practice and policies in criminal justice settings.

## Civil Rights

On February 1<sup>st</sup>, NASW social justice staff participated in an emergency field call related to an Executive Order about immigrant access to health care and safety net programs. This call was led by the National Immigration Law Center. Immigration is one of NASW's social justice priorities.

**Advertise in the NASW newsletter!** Reach over 900 social workers in Hawai'i!

Advertising Rates Line classified: \$4.00 per line, approximately 35 characters, with a 5 line minimum.

Display advertisements with borders: business card size = \$30; 1/4 page = \$50; 1/2 page = \$75; full page = \$115.

Deadline for Receipt of articles: Usually the last Friday of the month for the following month. Call the Chapter office to verify the next printing of the newsletter and website posting (rates are per month).

Advertisements may include employment, office space, seminars, or miscellaneous ads and will also be posted on our website for that month. Our website receives over 30,000 hits and over 3,000 individual visits each month.

NASW reserves the right to accept, reject or edit advertisements, articles and notices of events based on publication schedule, space limitations, and appropriateness. Publication of advertising copy does not constitute endorsement or approval of the contents therein of a book, other publications, points of view, standards of services or opinion presented therein, nor does NASW Hawai'i Chapter guarantee the accuracy or effectiveness of information, product, or service advertised. The views expressed do not necessarily represent positions of NASW.

During this time of tremendous challenges and opportunities in the movement, it is crucial that we come together to work towards a common goal that protects the democratic rights of all. There is a movement to curtail access to voting and limit the voices of the most vulnerable.

On February 16<sup>th</sup>, NASW followed-up on an invitation to participate in a strategy session on State Voting Rights. The session was hosted by AFL-CIO and was a working lunch that included strategic partners from a range of organizations including labor unions.

On February 17<sup>th</sup>, NASW social justice staff co-led, with the National Center for Transgender Equity, a Congressional briefing on the topic of access to health care for transgender people. The briefing was held at the HEAL hearing room of the Dirksen Senate Office Building.

On February 17<sup>th</sup>, NASW staff participated in an invitation only national conference call and strategy session on forming an immigration coalition dealing strictly with the plight of “Dreamers” and families of the “Dreamers.”

### **Support Letters:**

NASW has signed onto a number of letters of support. You can find a list of letters of support on our [web page](#). A sample from the last month is listed below.

- [NASW signs on to letter in support of the Office of National Drug Control Policy \(2/23/17\)](#)
- [NASW signs onto letter to Senators asking to maintain key protections for pre-existing conditions \(02/06/2017\)](#)
- [NASW signs onto letter to Representatives asking to maintain](#)

To follow National NASW legislative and advocacy work, visit the website

[http://www.socialworkers.org/advocacy/letters/statements\\_letters.asp](http://www.socialworkers.org/advocacy/letters/statements_letters.asp)



[key protections for pre-existing conditions \(02/06/2017\)](#)

- [NASW signs onto letter asking Congress to prioritize the most vulnerable in Medicaid \(1/31/2017\)](#)
- [NASW signs onto letter regarding Medicaid oversight \(1/30/2017\)](#)
- [NASW signs letter opposing confirmation of Betsy DeVos as Secretary of Education \(1/30/2017\)](#)

NASW has also submitted its own comments to the Administration and Congress. You can find this list on our [web page](#) as well

Dina Kastner  
[dkastner.nasw@socialworkers.org](mailto:dkastner.nasw@socialworkers.org)



Come play kickball to raise money for SW student scholarships  
and NASW Hawai'i advocacy work!

<http://www.naswhi.org/kickball-tournament.html>